

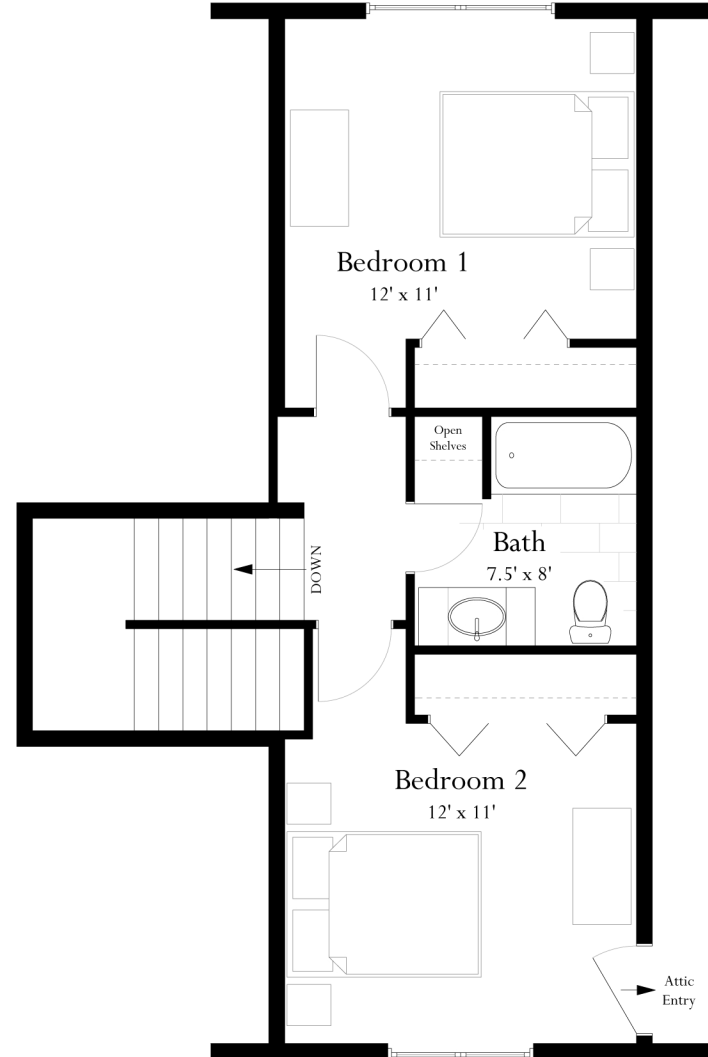
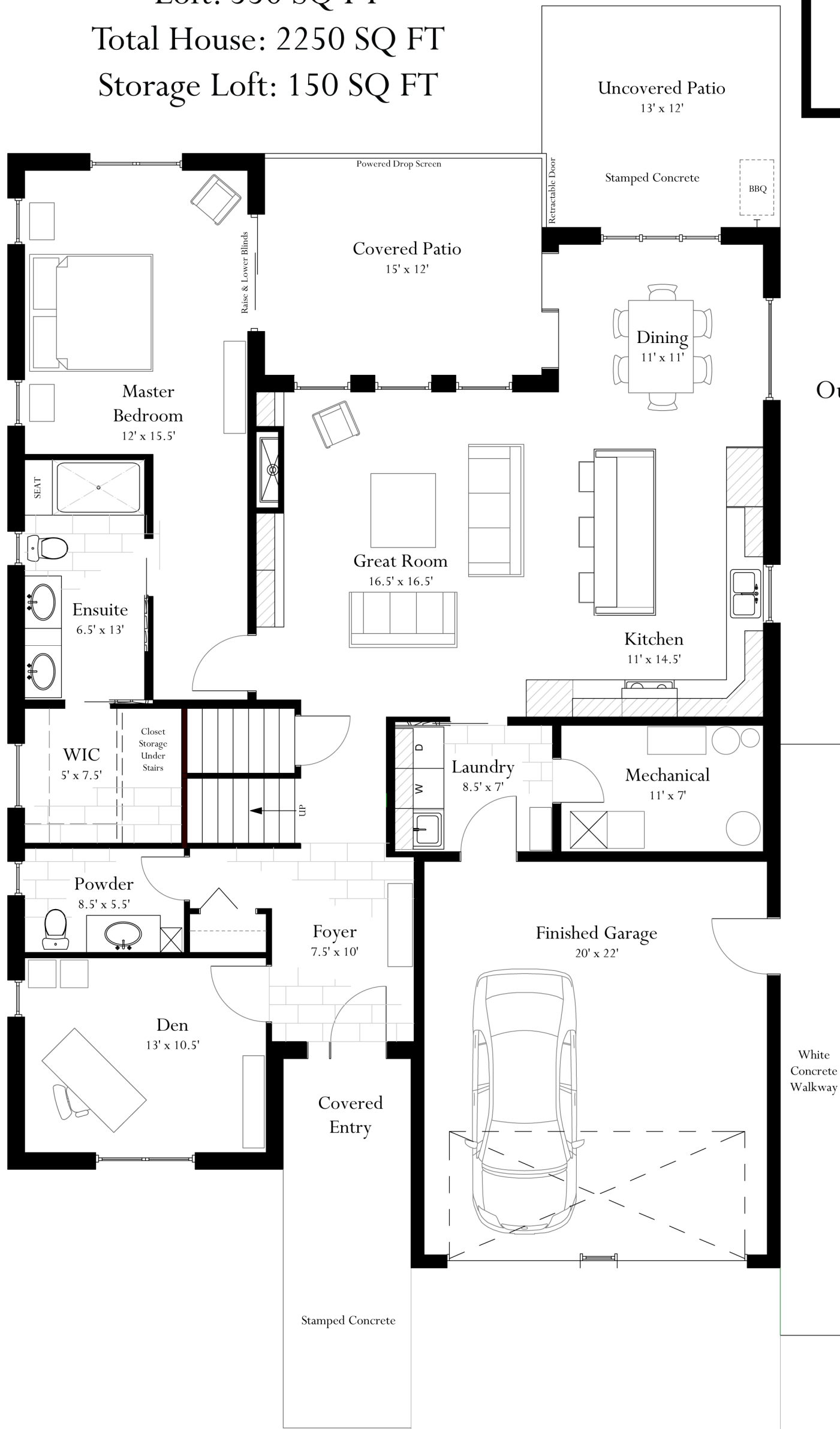


Main Floor: 1700 SQ FT

Loft: 550 SQ FT

Total House: 2250 SQ FT

Storage Loft: 150 SQ FT



Out the Door Price prior to April 1, 2026

~~\$1,089,050~~

Out the Door Price

April 1, 2026 - March 31, 2027

\$985,000

Price includes HST & applicable rebates
Some Conditions Apply

PROCEEDS OF THE SALE OF
THIS HOME DONATED TO:



**Trenton Memorial
Hospital Foundation**



The Gray Birch - 52 Beacon Drive